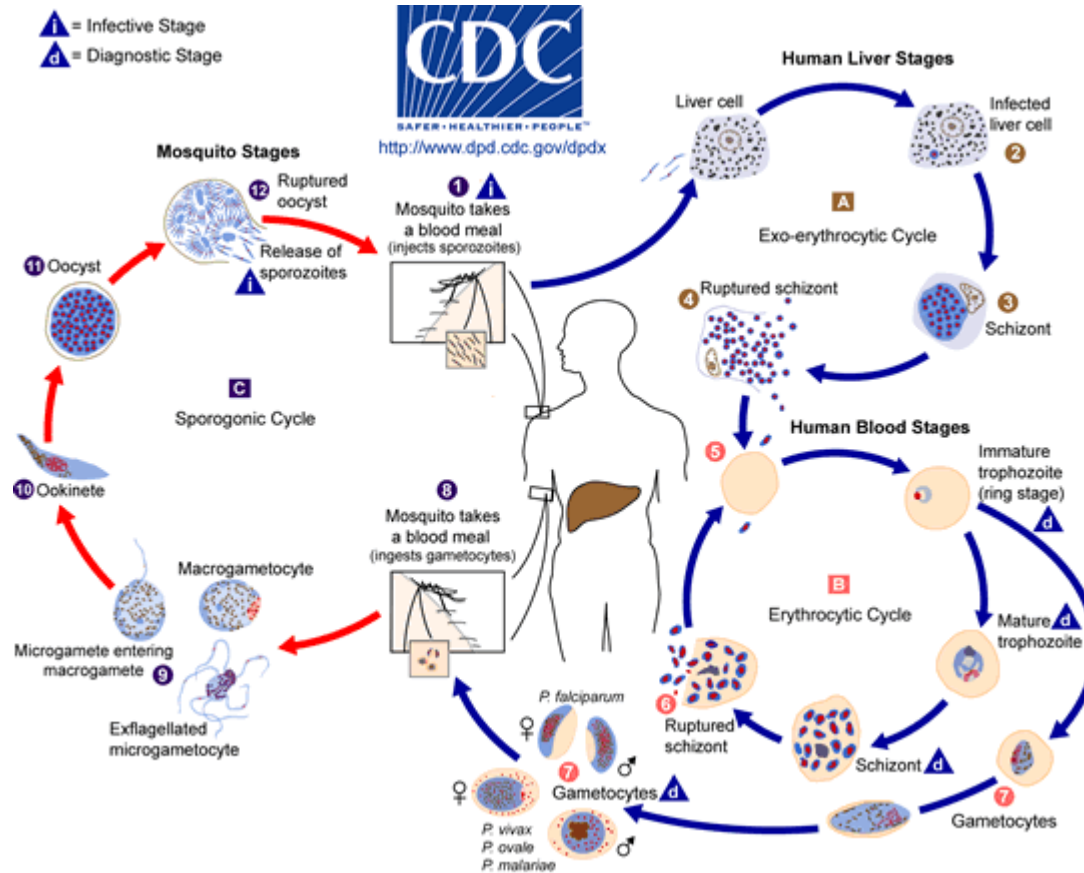


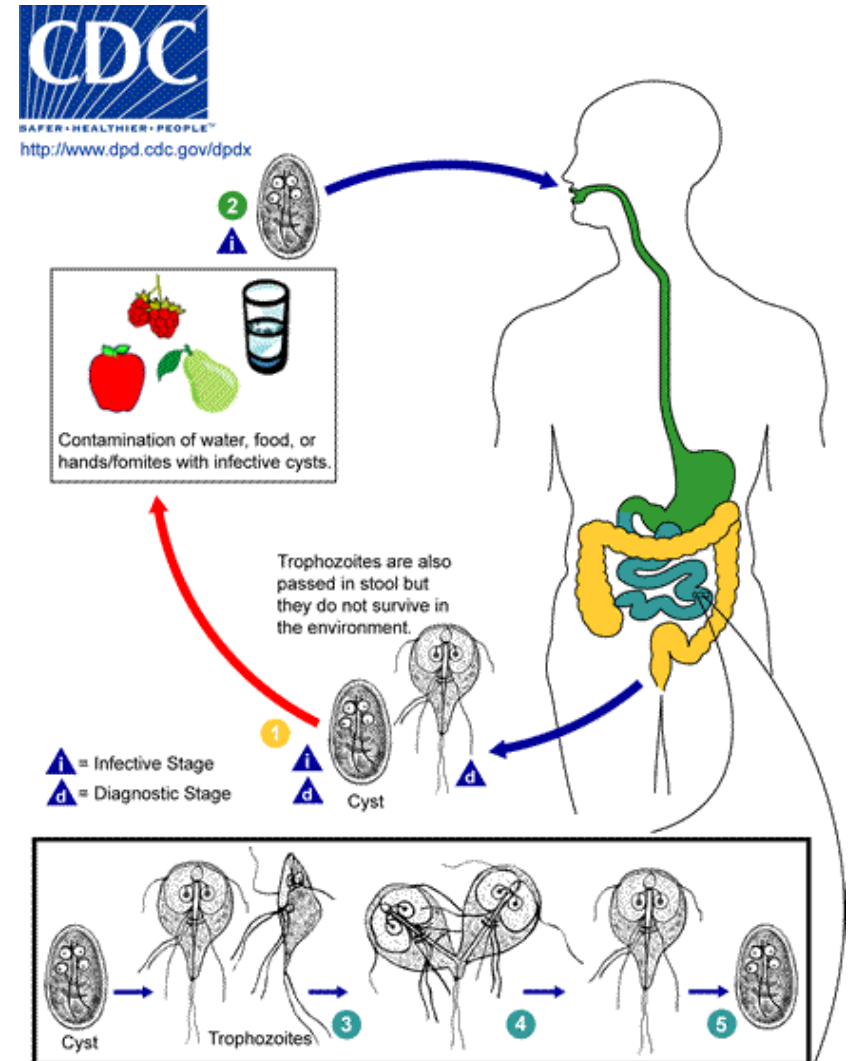
Malaria is caused by *Plasmodium* parasites

- Intracellular parasite
- Humans act as intermediate hosts where sexual and asexual forms of the parasite are found
- The parasite is transmitted by the bite of the female anopheline mosquito which acts as the definitive host

Plasmodium Life Cycle of Plasmodium



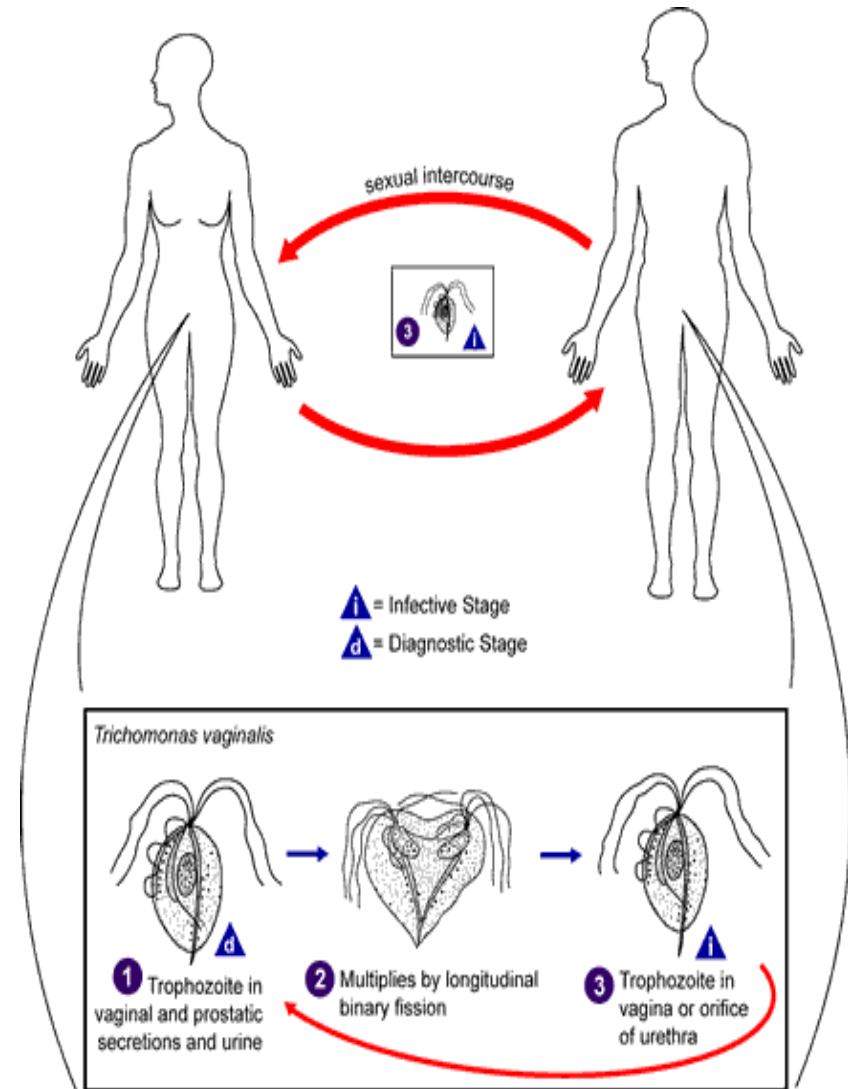
Life cycle of *Gardia intestinalis*



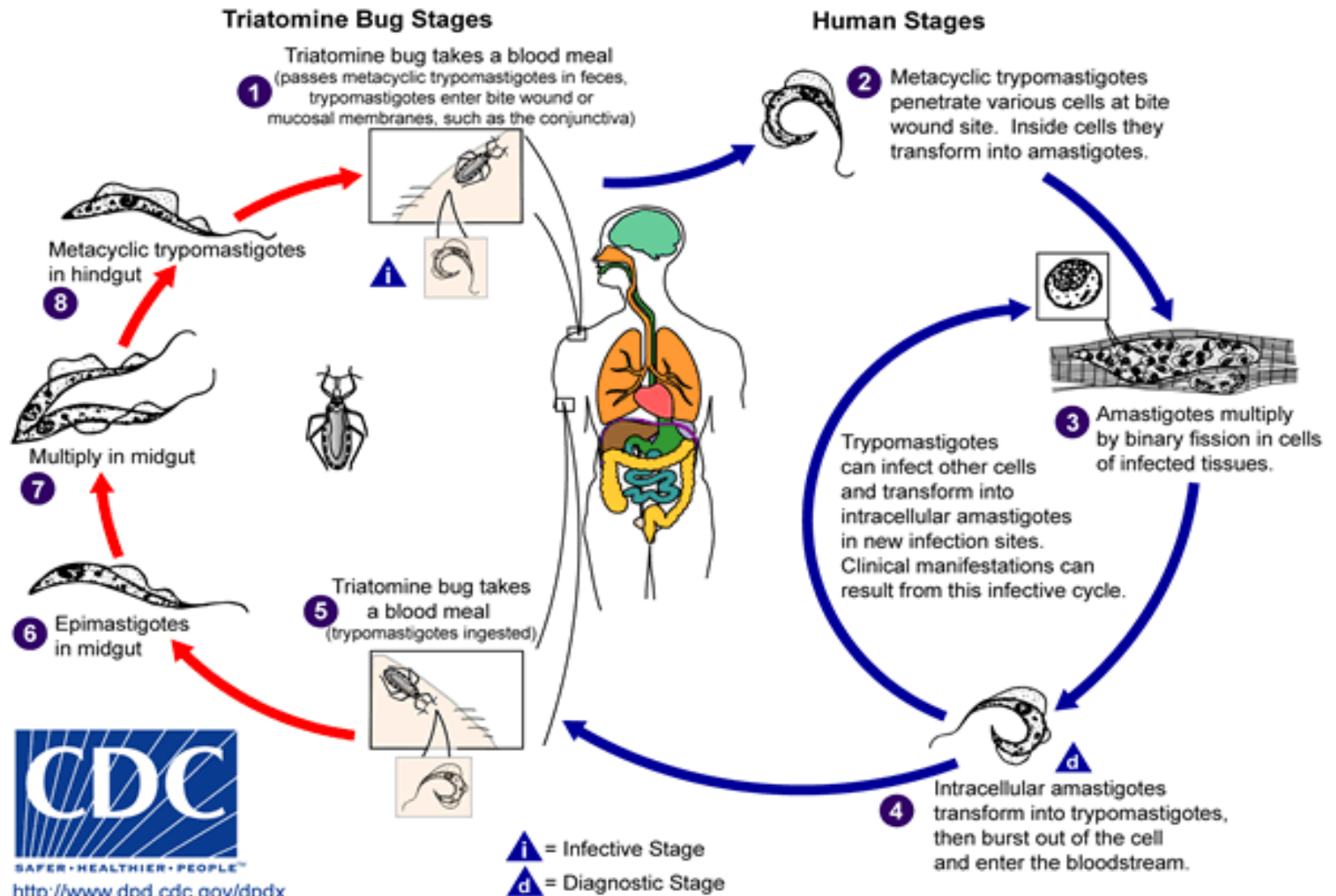
Chilomastix mesnili

A. in cecum and colon

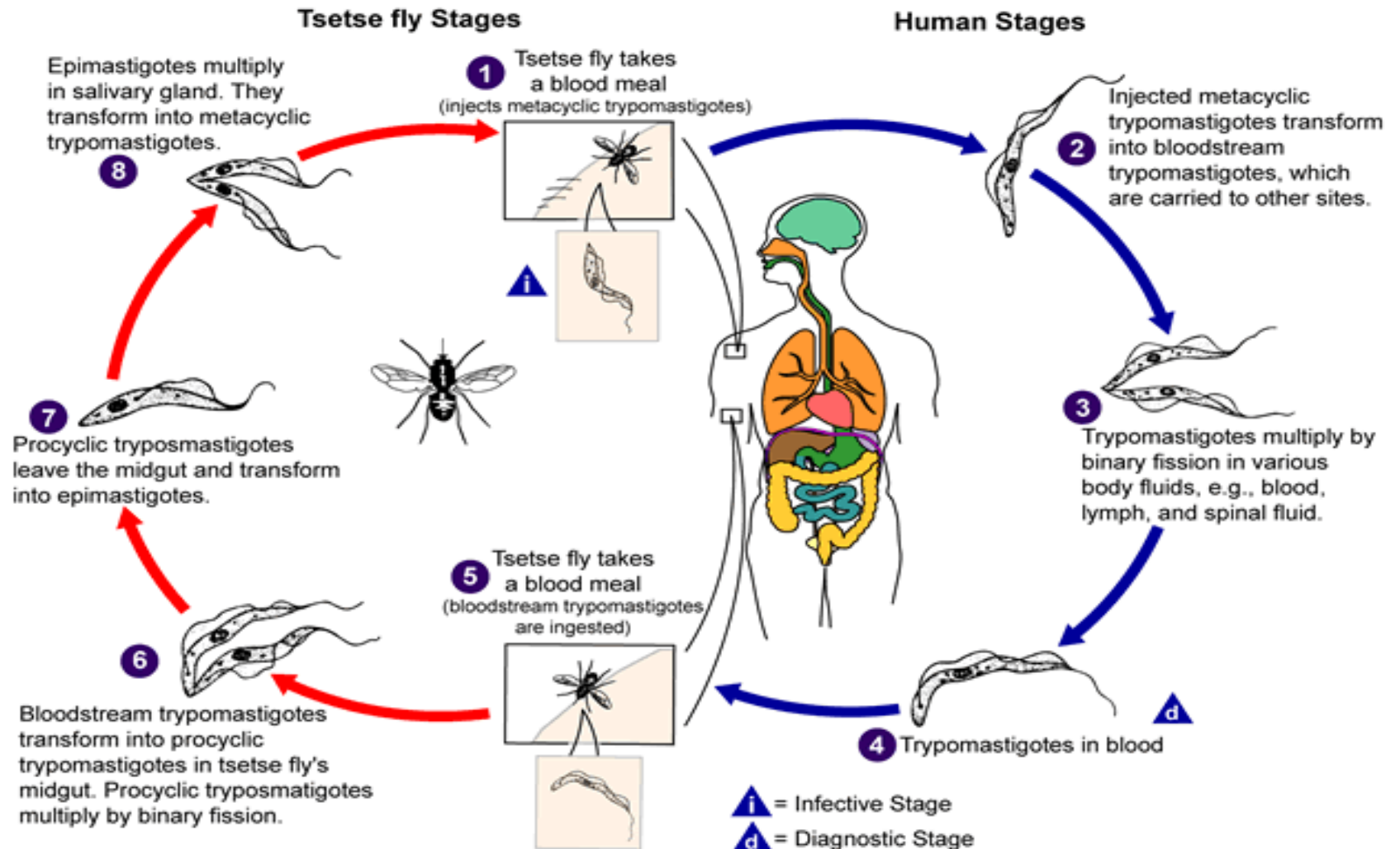
Life cycle of *T. vaginalis*



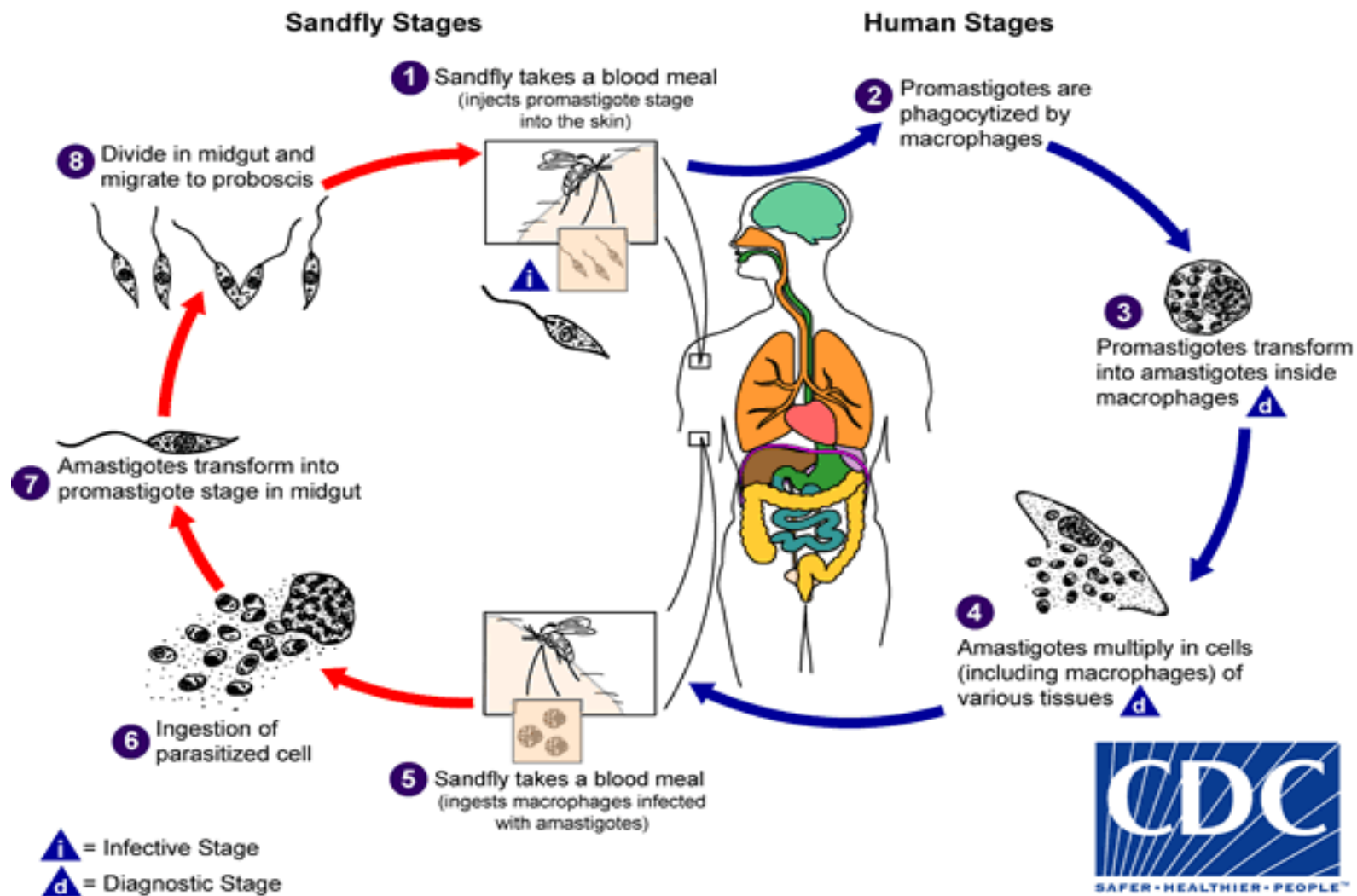
Trypanosoma cruzi - life cycle



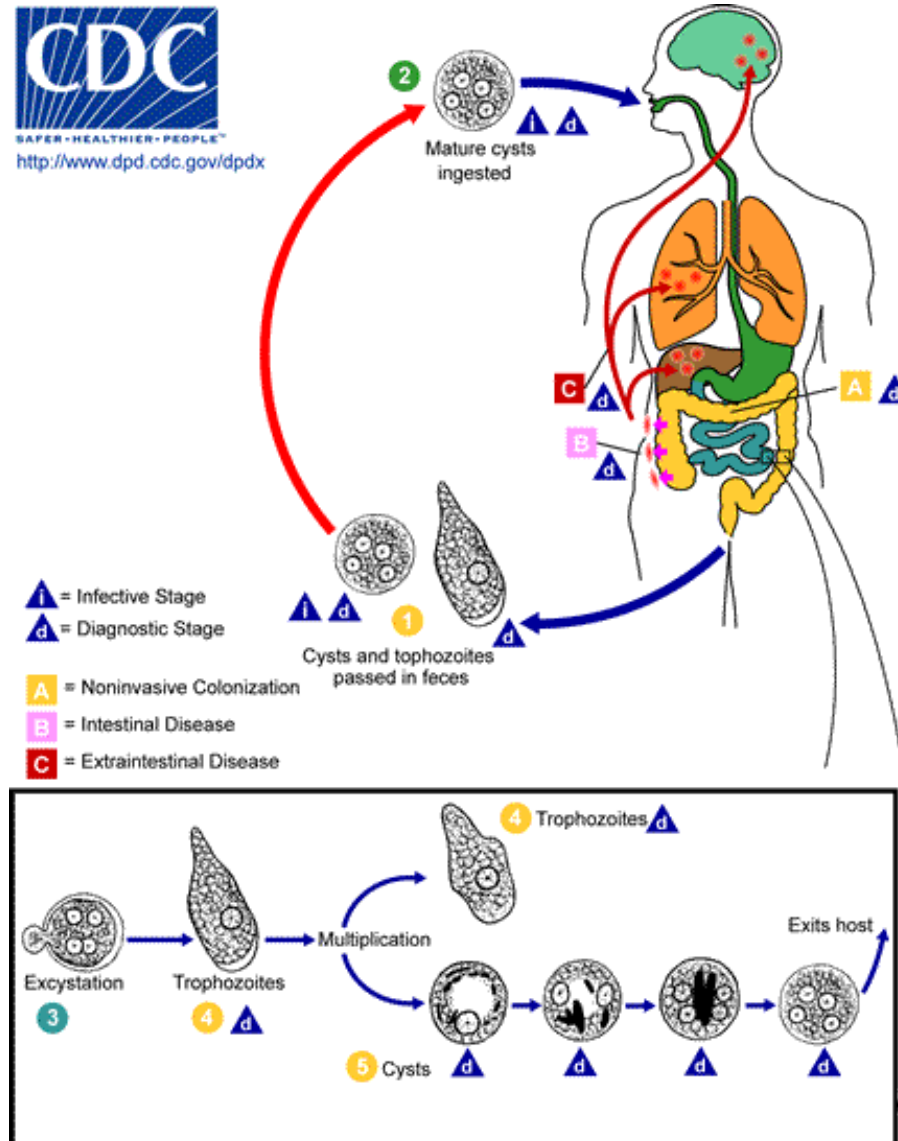
Life cycle of *T. b. gambiense*



Life cycle of *L. donovani*

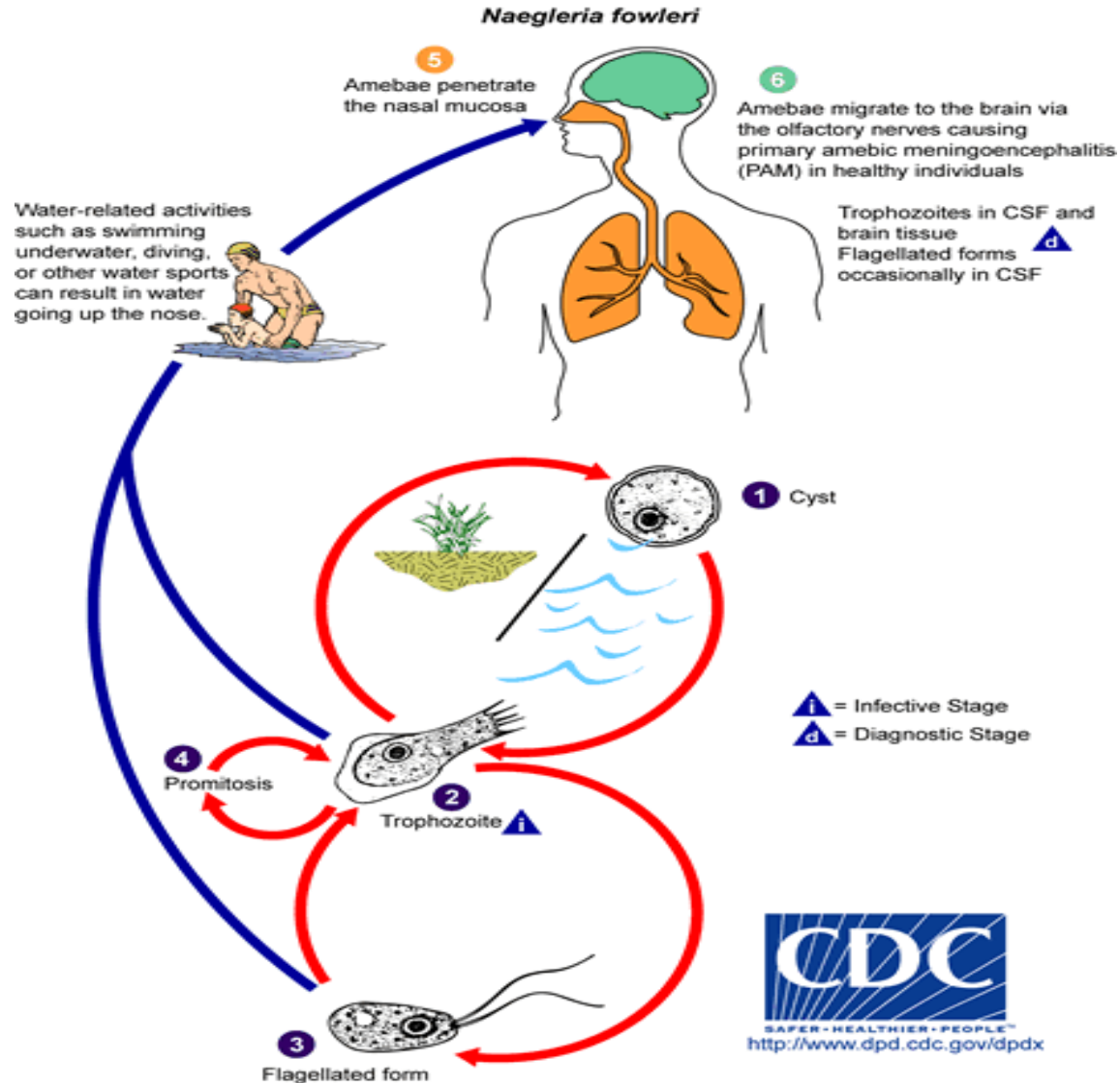


Parasite invasion – *E. histolytica*



Iodamoeba butschlii

Life cycle of *Negleria fowleri*

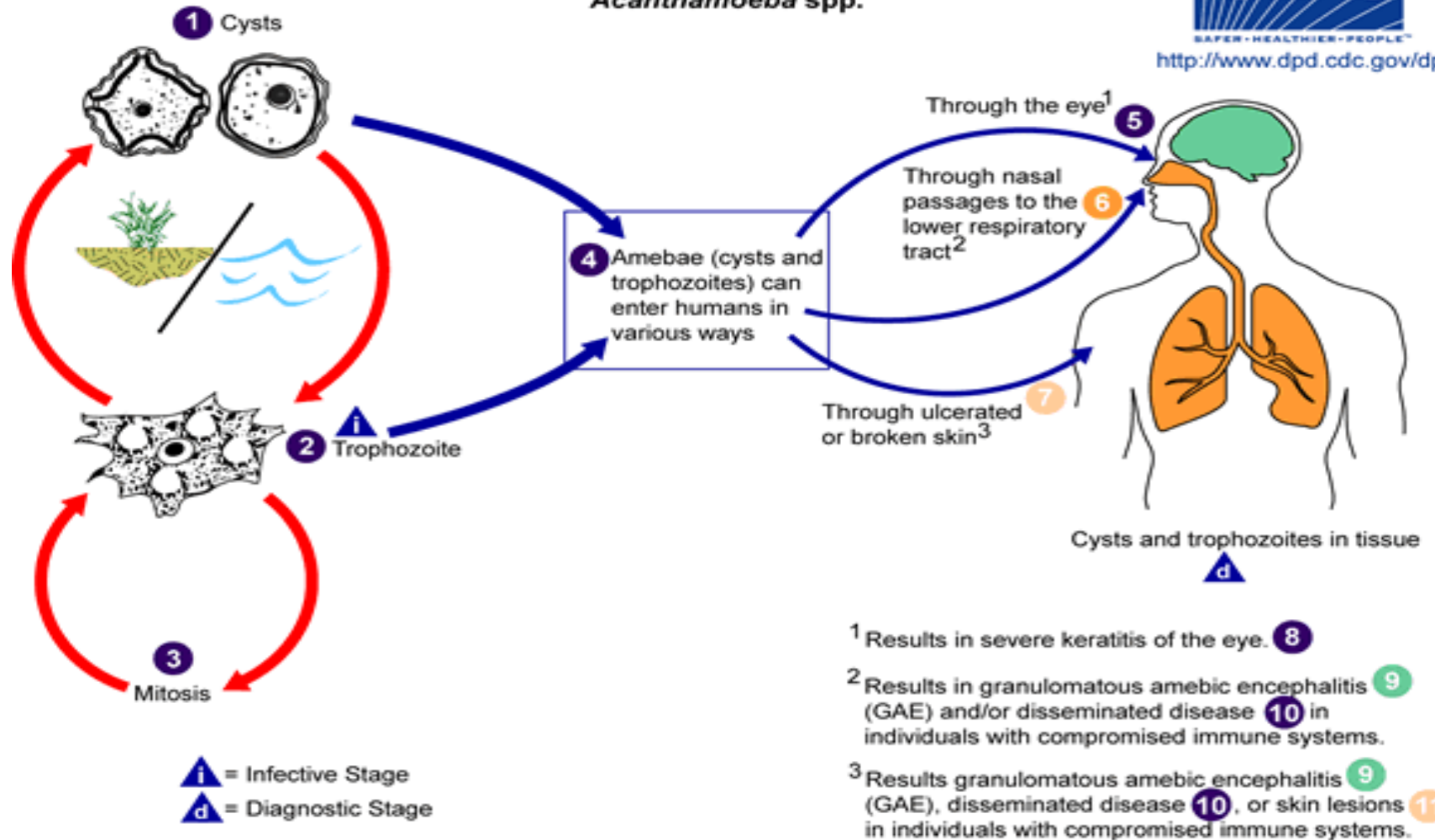


Life cycle of *A. castellani*

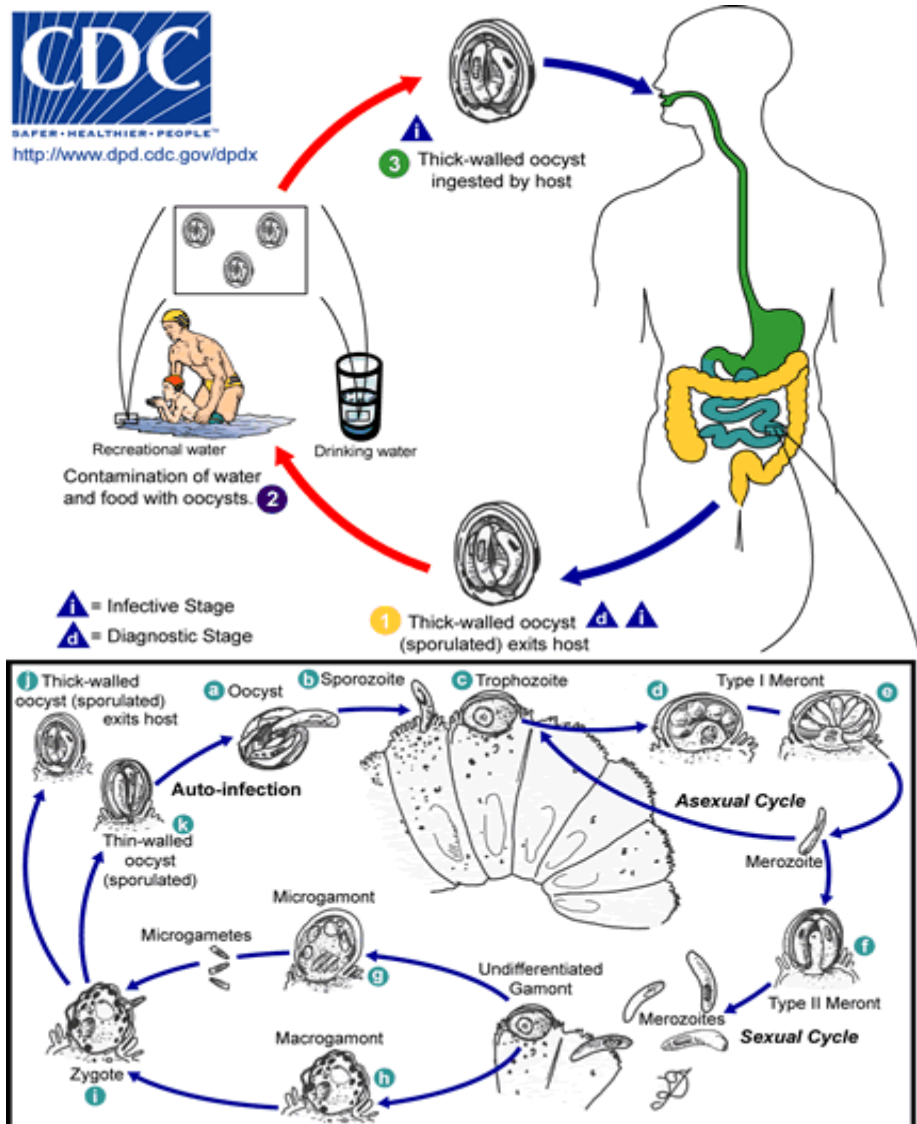


<http://www.dpd.cdc.gov/dpdx>

Acanthamoeba spp.



C. parvum life cycle

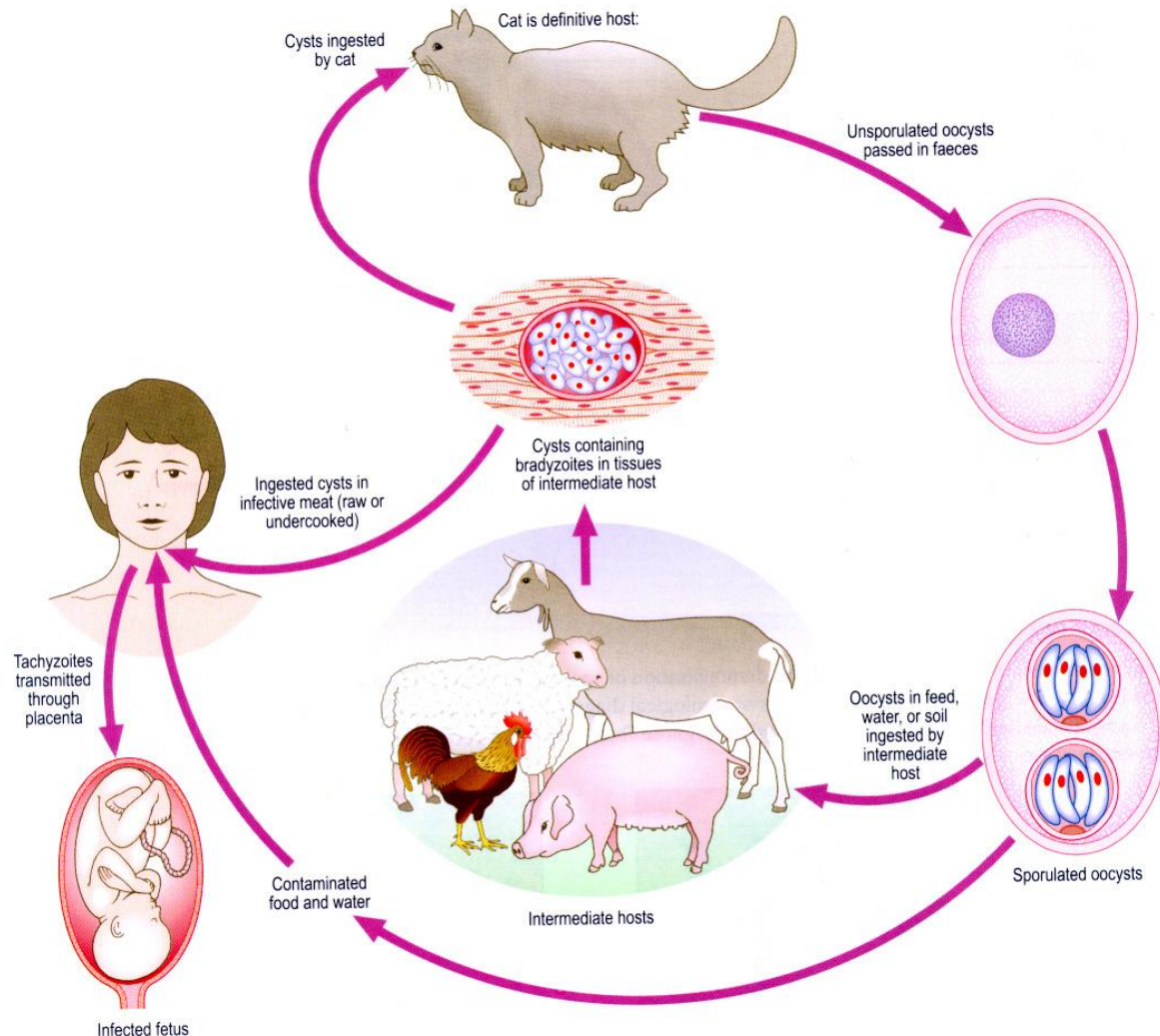


Human intestinal parasites with a similar life cycle

Isospora belli

Cyclospora cayetanensis

Life cycle of *Toxoplasma gondii*

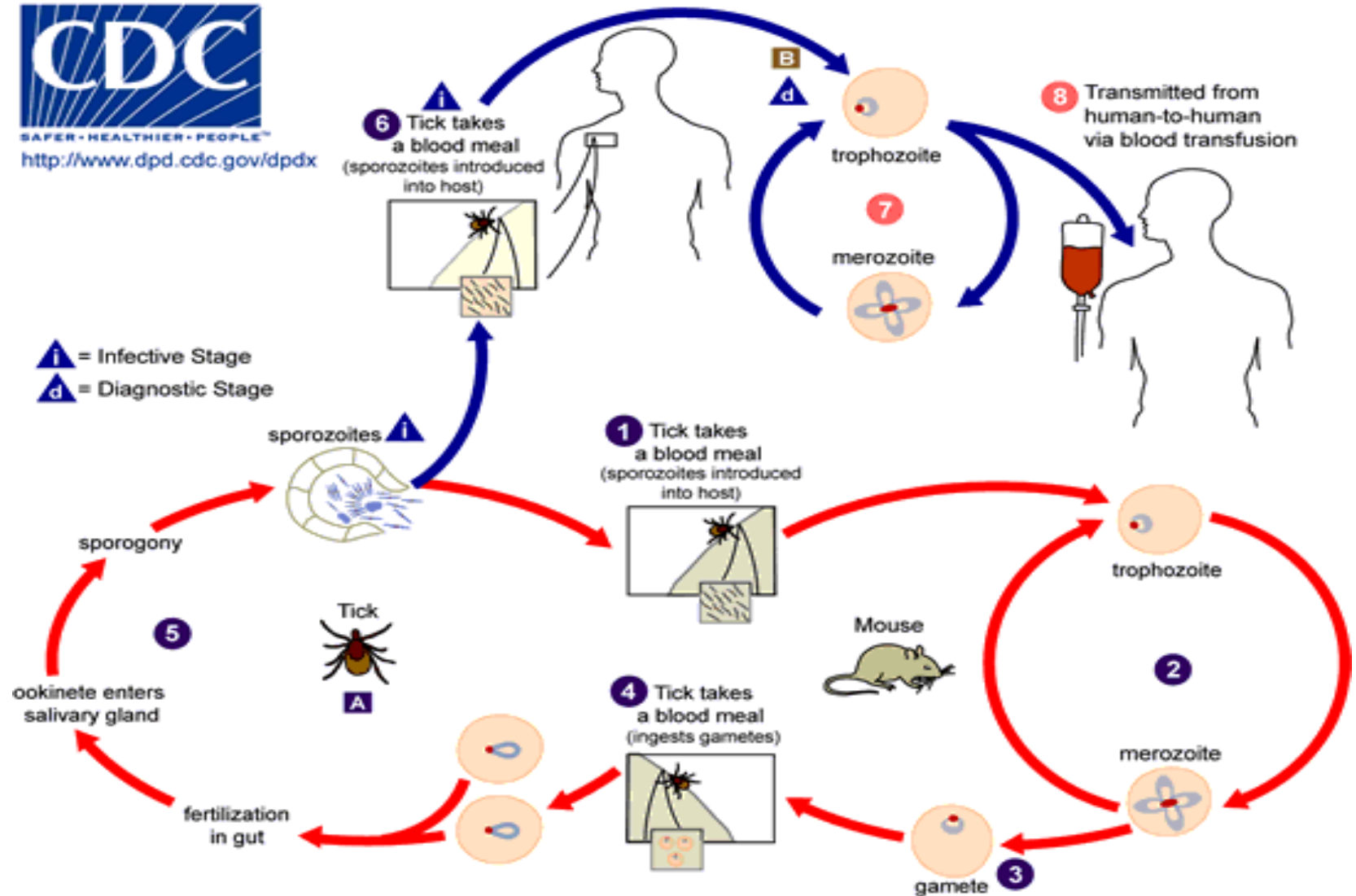


Life cycle of Babesia



SAFER • HEALTHIER • PEOPLE™

<http://www.dpd.cdc.gov/dpdx>



Life cycle - *Balantidium coli*

